

# ***Collision Repair Alignments***

***Keep more profits in-house!***



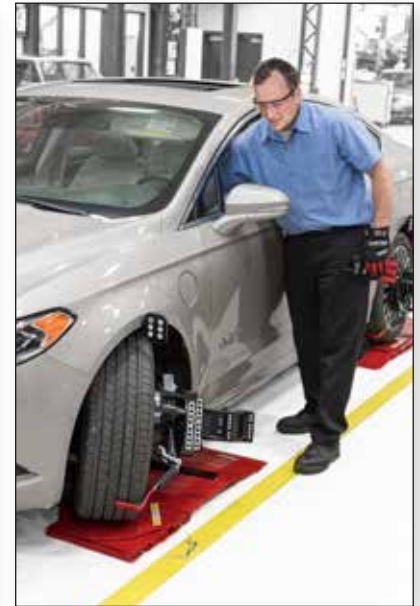
**Fits...**

- ✓ **Chief®**
- ✓ **Car-o-Liner®**
- ✓ **Other leading brands**

# Benefits of Performing Alignments In-House

## Check Alignments

- ✓ Find hidden damage when writing the estimate
- ✓ Locate...
  - Shifted or damaged subframe or unibody
  - Damaged lower control arms
  - Shifted or damaged axles
  - Bent spindles, and more
- ✓ Reduce supplements
- ✓ Order parts ahead of time



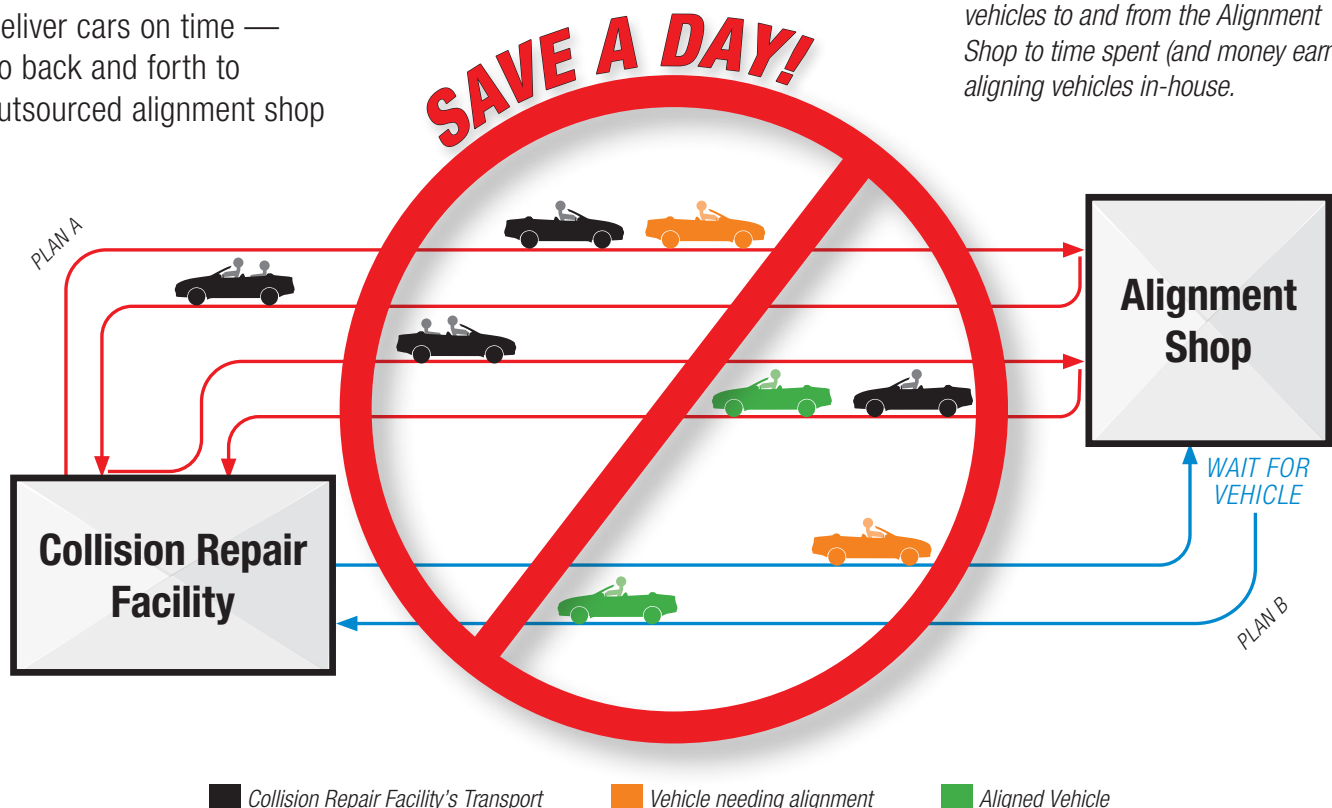
Optional wide angle targets shown

## Reduce Operating Expenses and Save a Day

- ✓ Eliminate transport and wait times
- ✓ Ensure quality of alignments
- ✓ Reduce vehicle rental expenses
- ✓ Deliver cars on time — no back and forth to outsourced alignment shop

**Consider how much time technicians/porters spend transporting vehicles.**

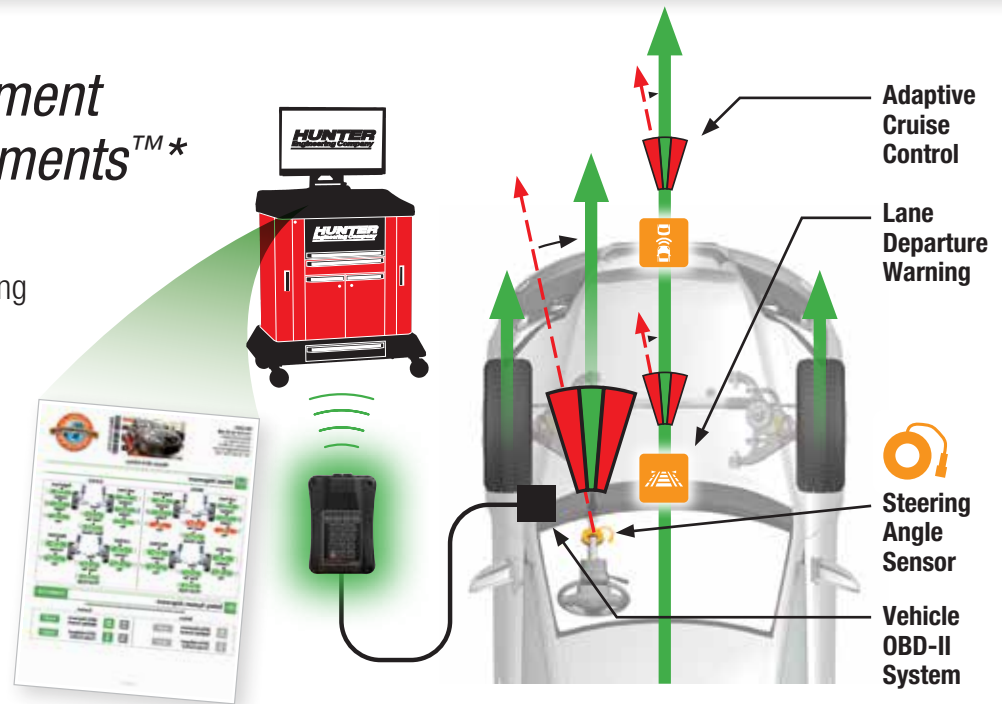
Transform time spent transporting vehicles to and from the Alignment Shop to time spent (and money earned) aligning vehicles in-house.





## Complete and Document Safety System Alignments™\*

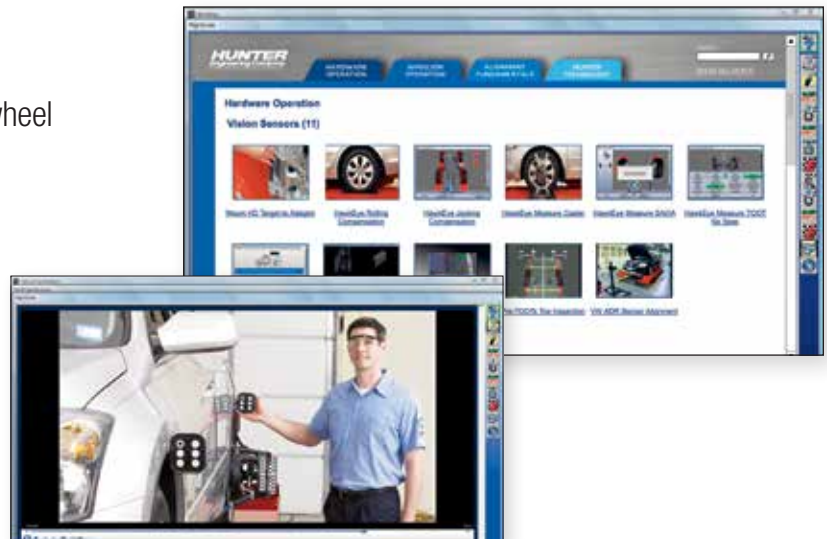
- ✓ Advanced Driver Assist System (ADAS)\*\* calibration and Steering Angle Sensor (SAS)\*\* resets
- ✓ Documentation of results provided for each procedure



## Just-In-Time Training

400+ videos and animations cover all aspects of wheel alignment today.

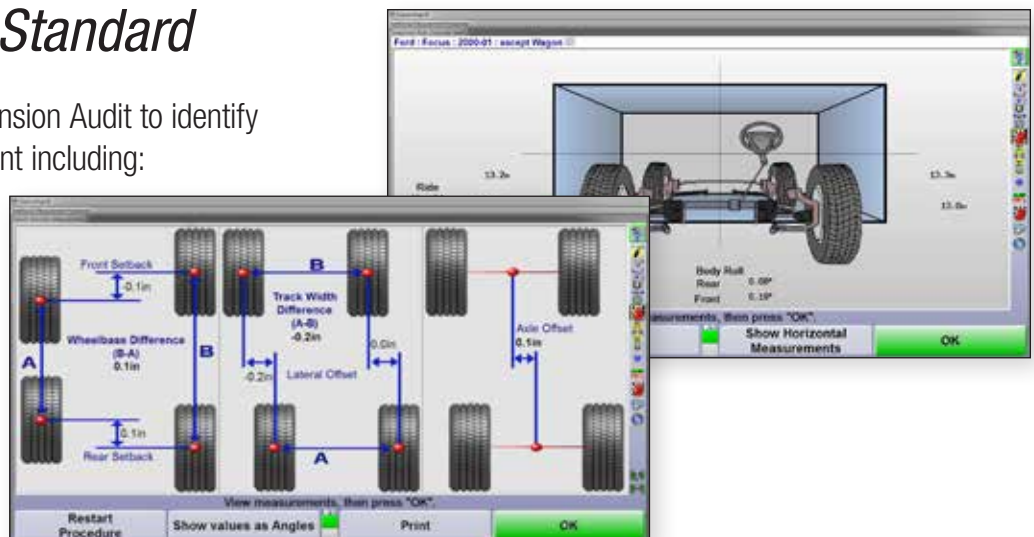
- ✓ Demonstrating typical alignment procedures
- ✓ Step-by-step instructions on how to make alignment corrections and illustrate the causes of problems
- ✓ Assistance with WinAlign "Power Tool" features, measurement/adjustment procedures, and other software functions



## Diagnostic Angles Standard

Perform a Suspension Body Dimension Audit to identify components affected in an accident including:

- ✓ Axle setback and offset
- ✓ Wheelbase
- ✓ Trackwidth
- ✓ Ride height
- ✓ Max steer
- ✓ Symmetry, and more



\* Additional tools may be required for diagnostic and programming

\*\* Refer to 1708-T for coverage

# Perform Complete In-House Alignment Services

## Hunter's Portable Turnplate Kit is Compatible with Most Frame Racks

The kit includes four turnplates, ramps, wheel chocks and a wheeled cart that provides easy mobility and compact storage.



*Car-o-Liner® example*



*Chief® example*

## Flat floor capability also available

*Shown with HawkEye Elite® alignment system sold separately.*



Inspect vehicles during estimation or set up a bay on the floor to align vehicles that are too large or long for your existing alignment lift.

### High-Volume Shops: Free Up Your Frame Rack

Optimize your frame rack availability by adding a Hunter alignment rack.

*See Form 7005-T for more details.*



**HUNTER**  
Engineering Company

[www.hunter.com](http://www.hunter.com)

11250 Hunter Drive, Bridgeton, MO 63044, USA  
Tel: 1-314-731-3020, Fax: 1-314-731-0132  
Email: [international@hunter.com](mailto:international@hunter.com)

*Because of continuing technological advancements, specifications, models and options are subject to change without notice.*

1121DH

Copyright © 2021, Hunter Engineering Company

Form AB07461-05 11/21  
Supersedes Form AB07461-00, 11/21